

Comparative Study

Joshua Homesombath

Introduction: My comparative study is structured to analyze technical aspects of two artists and three of their works. These artists are from different time periods, art movements and mediums. The two artists that will be presented in this Comparative study are; Vincent Van Gogh and Salvador Dali. I have chosen to use these artists, because of their skills and their use of the environment. I also will be critiquing six artworks of Vincent Van Gogh and Salvador Dali, using the elements and principles of design. Finding in-depth creative techniques, reason, and inspiration between the artist's and their works.

EVALUATION OF THE CULTURAL SIGNIFICANCE OF VINCENT VAN GOGH

Post-Impressionism

- Post Impressionism styles derived from their predecessors.
Breakthroughs
- They wanted to express their emotions through color and light.

Besant - created a quasi-Scientific method called "pointillism."
- It consisted of applying colorful dots of pure, unmixed color.
- Besant - for him warm colors meant action and gaiety, as did lines moving upward. Dark, cool colors and descending lines evoked sadness. middle tones (blues and greens) and lateral lines conveyed calm.

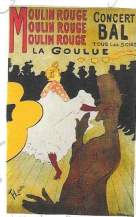


- Besant - for him warm colors meant action and gaiety, as did lines moving upward. Dark, cool colors and descending lines evoked sadness. middle tones (blues and greens) and lateral lines conveyed calm.

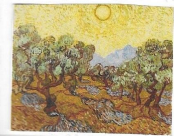
Toulouse-Lautrec - He is credited with creating poster and lithography as respectable art mediums. He specialized in portraying movement and private moments through slices of life glimpsed. Almost always interior night scenes lit by glowing artificial light.
- Cezanne - offered a new view of surface appearance. Instead of imitating reality he saw its underlying geometry. He could simplify objects into near abstract forms.



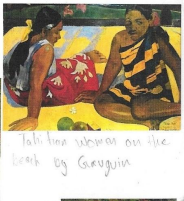
- Gauguin - prosperous Parisian stockbroker before he took up Sunday painting in 1873. Gauguin was "to return painting to its primal emotion and imagination."
- He was not without means for days in a week because he let his friends to buy food.
- Without money for material Gauguin still painted, doing thin paint on coarse burlap instead.



Van Gogh - when van Gogh saw impressionism in Paris he actually radically changed the palette from dark to bright colors and from social realist themes to light domestic outdoor scenes.



- Olive trees by van Gogh
- Portrait of Joseph Tassin by van Gogh

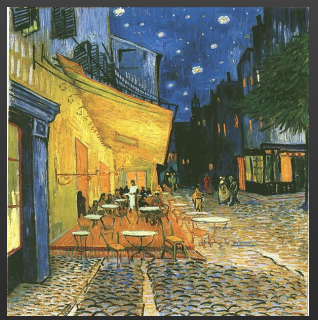


Notes on Impressionism

Vincent Van Gogh has to be the greatest Dutch painter. He was virtually unknown and not wealthy at all. Van Gogh was a post-impressionist painter whose work highly influenced the 20th century, for its beauty, emotion, and color. Paris was where Van Gogh saw impressionist art and was inspired by the light and color. Vincent Van Gogh studied alongside Henri de Toulouse-Lautrec, Pissarro and others.

Vincent was a very passionate and loved to argue about others artwork. Vincent really enjoyed the Japanese culture. It's what inspired some of the works that he has created. He studied this philosophy to enhance his art and basically his life.

Vincent Van Gogh was so dedicated to his work that he spent money on paint rather than food and that was during the time he moved to the village Arles where he lived in a yellow household. Van Gogh's life lies in the fact that art was for him was a personal destiny. His career as an artist is a high religious-moral, his work has a profound personal meaning and it engages him completely, and could be created in his own home.



NA. "Van Gogh, Vincent." "biography.com,"
NA, NA, A&E Television
Networks, <https://www.biography.com/people/vincent-van-gogh-9515695>

"I want to paint what I feel, and feel what I paint." - Vincent van Gogh



"STARRY NIGHT"

Van Gogh, Vincent. "Starry Night." "moma," Lillie P. Bliss Bequest, NA, NA, <https://www.moma.org/collection/works/79802#top>

The background of the work is being emphasized through the color and value. The sky takes up most of the canvas. What is being emphasized in the painting is the bright yellow moon. One thing I notice right away is the space/perspective of the painting, the 2D illusion, simple overlapping, and using darker images in the front and then fading into the light in the back. Van Gogh used space effectively in the painting.

The work conveys contrast through texture, the sky looks to have a rough surface and the bottom part of the work seems to have a smooth surface. The small yellow lights in the buildings are all square or rectangle in shape, in contrast to the stars above.

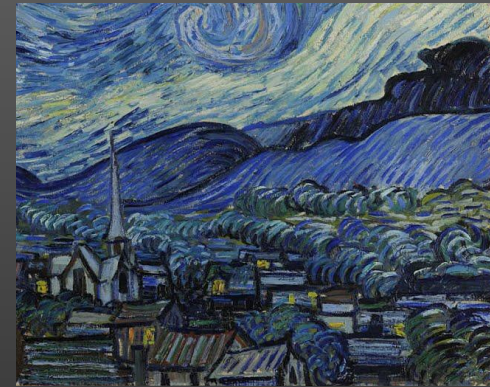
In addition to the painting line and value is heavily used. Above, the vertical bush leads my eyes up to the diagonal and curving lines of the blue sky and then towards the moon. It can be argued that value is not used enough in the painting. But, the hills in *Starry Night* uses value correctly fading from blue to dark navy. The moon and dark bush is a variation in value.



"This morning I saw the country from my window a long time before sunrise, with nothing but the morning star, which looked very big," van Gogh wrote to his brother Theo, from France.

Gogh, Vincent van. "Vincent van Gogh. The Starry Night. Saint Rémy, June 1889 | MoMA." *The Museum of Modern Art, www.moma.org/collection/works/79802. Thomson, Belinda. Van Gogh. New York: Abrams, 2001. Print.*

Date of Creation: 1889
Height (cm): 73.70
Length (cm): 92.10
Medium: Oil
Support: Canvas
Subject: Landscapes
Characteristics:
Post-impressionism
Framed: Yes
Art Movement:
Post-Impressionism
Created by:
Vincent van Gogh



There's movement presented through line that is horizontal and the movement is emphasized with the fine lines. The swirls in the sky carries to the moon and then leads me back the dark bush on the left corner of the painting.

The work takes advantage of repetition through the use of the color blue and the brushstroke. It is seen in repeating of shapes and colors. The yellow moon helps to balance the large dark bush that's in the opposite corner.

Also the color used in the painting. The painting is made of mostly dark and light colors, with some yellow added to have the contrast of the work. It provokes a spiritual feeling, and disordering many viewers perspective on nature.

A contrast of discrete paleness with the gold of gas lights. Van Gogh wanted the challenge of capturing the colors of the night sky in contrast to the artificial lights that are in the background of the painting.

Lines that create texture and have thin lines across the piece. Strictly reflects the way Van Gogh views nature and also have a personal meaning to him. Places that were familiar to Van Gogh were basically painted and created in his vision

Repetition (stroke) emphasize the importance Van Gogh placed in capturing the sparkling colors of the night sky and the artificial lighting. This *Starry Night* painting Depicting color was of great importance to Van Gogh.

Van Gogh, Vincent. "Starry Night Over the Rhone." "en.wikipedia.org."
NA, NA, NA,
https://en.wikipedia.org/wiki/Starry_Night_Over_the_Rhone

"STARRY NIGHT OVER THE RHONE"

Emphasis through value of the work. Using light and darkness. This allowed Van Gogh to capture the reflections of the lighting come from the town. Using dark blue and yellow to visually show the landscape.

Movement of the painting can be seen is used by the brushstroke that was used by Van Gogh.

Artist: Vincent van Gogh
Dimensions: 2' 5" x 3' 0"
Location: Musée d'Orsay
Created: September 1888
Medium: Oil on canvas
Periods: Modern art, Post-Impressionism



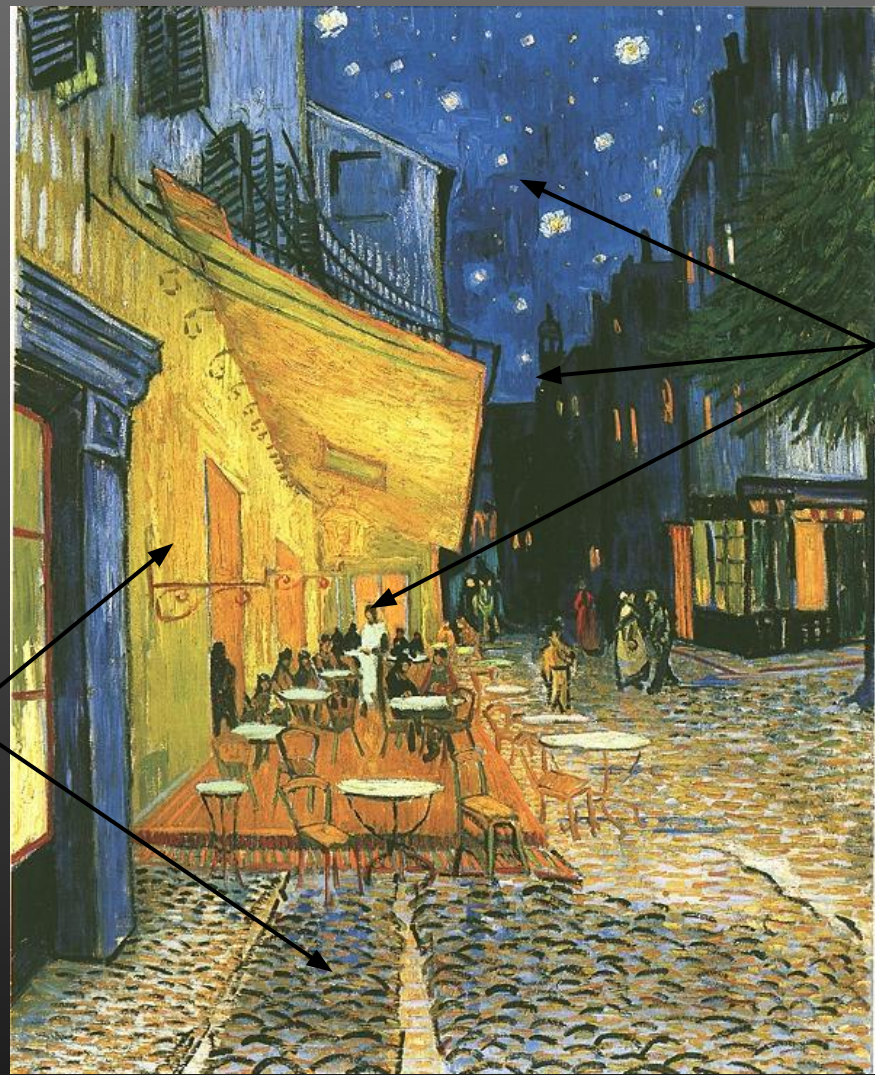
"CAFE TERRACE

AT NIGHT"

"I have a terrible need of-dare I say-religion...then I go outside at night and paint the stars." - Vincent Van Gogh

Value is used with color. The bright yellow-orangish along with the green is the artist's creation. This impact of impressionism in Van Gogh's art can be apparent as well as the use of bright colors. This draws the viewer into the painting and beyond.

The bright yellow brings out a warm feeling. This painting invites people to take a deeper look. The night at a cafe has been emphasized by this depiction. An actual place that brought along so many visitors to view the cafe and to see where Van Gogh placed his easel.



The dark background helps to gather everything making it a beautiful composition. Also Helps depict the actual distances and capturing our eyes. Cafe terrace has the strongest communications through art of human conditions and emotions.

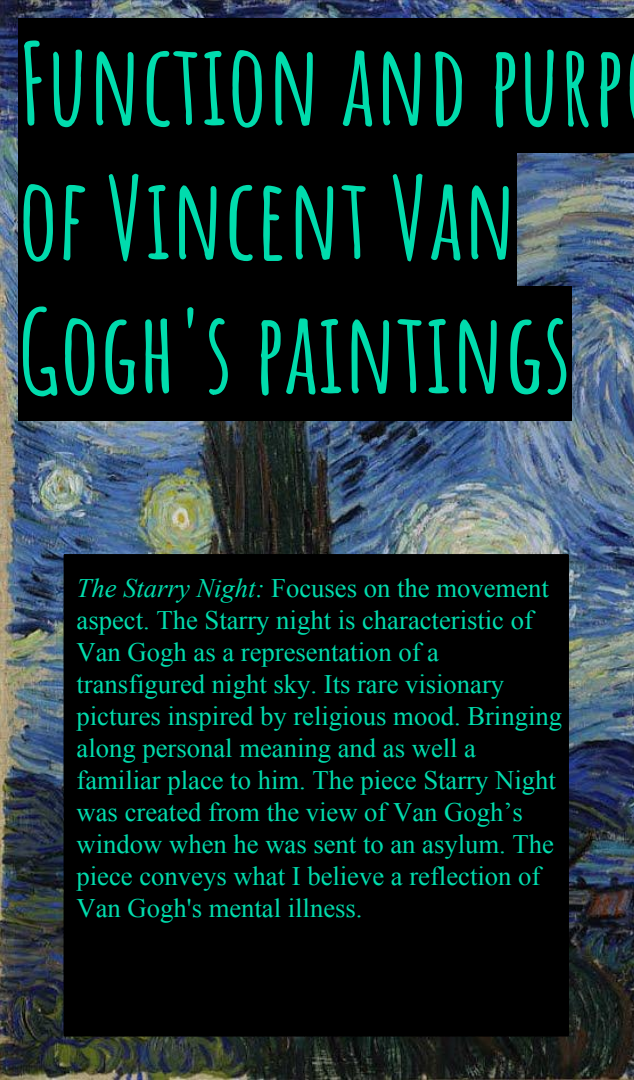
The intention of this painting was to show the lowest part of humanity with much sincerity and impact. The balance feels in relations to asymmetrical being the attention to the left side of the work.

The message that is being presented seems to be going towards peace with full lights and beautiful techniques. This painting is sought to show the 1888 society.

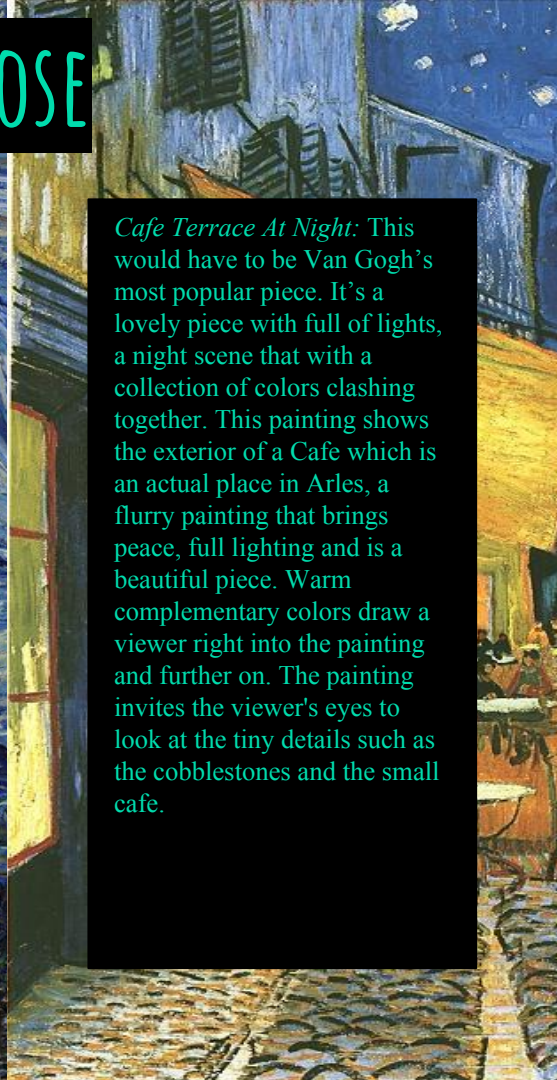
Artist: Vincent van Gogh
Dimensions: 2' 8" x 2' 2"
Location: Kröller-Müller Museum
Created: September 1888–September 16, 1888
Period: Post-Impressionism
Medium: Oil paint

Van Gogh, Vincent. "Cafe Terrace At Night." "en.wikipedia.org." NA, NA, NA, https://en.wikipedia.org/wiki/Caf%C3%A9_Terrace_at_Night

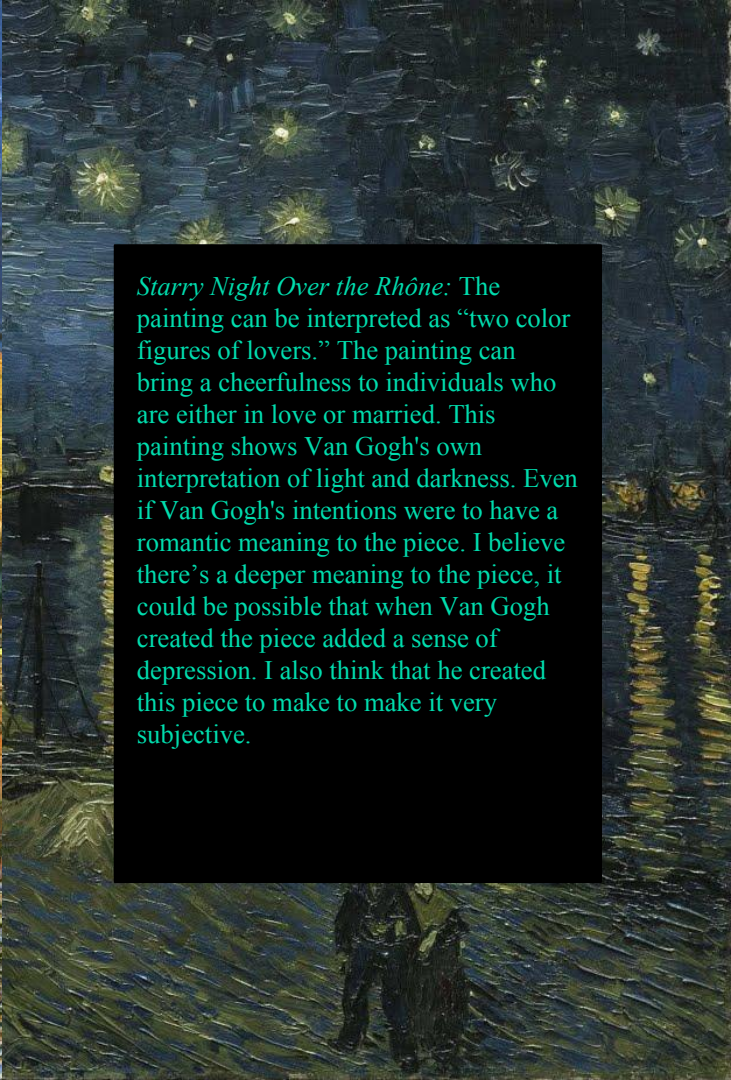
FUNCTION AND PURPOSE OF VINCENT VAN GOGH'S PAINTINGS



The Starry Night: Focuses on the movement aspect. The Starry night is characteristic of Van Gogh as a representation of a transfigured night sky. Its rare visionary pictures inspired by religious mood. Bringing along personal meaning and as well a familiar place to him. The piece Starry Night was created from the view of Van Gogh's window when he was sent to an asylum. The piece conveys what I believe a reflection of Van Gogh's mental illness.



Cafe Terrace At Night: This would have to be Van Gogh's most popular piece. It's a lovely piece with full of lights, a night scene that with a collection of colors clashing together. This painting shows the exterior of a Cafe which is an actual place in Arles, a flurry painting that brings peace, full lighting and is a beautiful piece. Warm complementary colors draw a viewer right into the painting and further on. The painting invites the viewer's eyes to look at the tiny details such as the cobblestones and the small cafe.



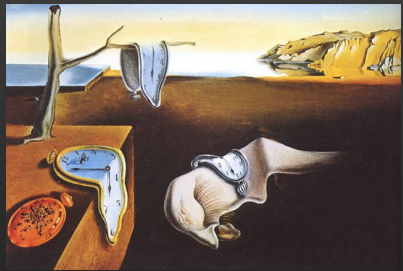
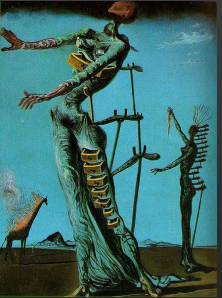
Starry Night Over the Rhone: The painting can be interpreted as "two color figures of lovers." The painting can bring a cheerfulness to individuals who are either in love or married. This painting shows Van Gogh's own interpretation of light and darkness. Even if Van Gogh's intentions were to have a romantic meaning to the piece. I believe there's a deeper meaning to the piece, it could be possible that when Van Gogh created the piece added a sense of depression. I also think that he created this piece to make to make it very subjective.

EVALUATION OF THE CULTURAL SIGNIFICANCE OF SALVADOR DALI

DALI

Salvador Dalí was a Surrealist artist. In 1904 Dali was encouraged to practice his art and would eventually go on to study at Madrid. In the late 19th century. During this time, he was influenced by several different artistic styles, including Metaphysics and Cubism, which earned him attention from his fellow students.

Dalí painted a number of works that displayed Picasso's influence. Poet Paul Éluard and painter René Magritte introduced Dalí to Surrealism. By this time, Dalí was working with styles of Impressionism, Futurism, and Cubism. Dalí's paintings became associated with three general themes: Man's universe and sensations, sexual symbolism and ideographic imagery.



"Salvador Dalí." Biography.com, A&E Networks Television, 27 June 2017, www.biography.com/people/salvador-dali-40389

Notes on surrealism

60 Surrealism - Goal was to tap into or conscious imagery centered around two forms: Improvised art, Hallucinatory scenes, Improvised art & pictorially thimblees from conscious control

Joan Miro - worked spontaneously either in a trance-like state or creative frenzy. Used almost non-abstract forms to represent common things. Compositions, animals



Hallucinatory Arts - used realistic techniques to create hallucinatory scenes that defy common sense.
- Salvador Dali - painted with meticulous realism. Distorted object grotesquely placed them in unreal dream landscapes.
René Magritte - Painted disturbing, illogical images with startling clarity.



Birth interior by Joan Miro

- Put everyday objects in odd situations to startle the viewers

Birth interior 2 by Joan Miro.



Jeep by Salvador Dali



Man of man by Magritte



Persistence of memory by Salvador Dali



Homey men by René Magritte



The false mirror by René Magritte

Salvador Dalí was notorious for his colorful personality and his figure of the surrealist movement. He created his own reality through his paintings adding his dreams and subconscious thoughts. Mentally shaping his own reality and that became a way of life for dalí.

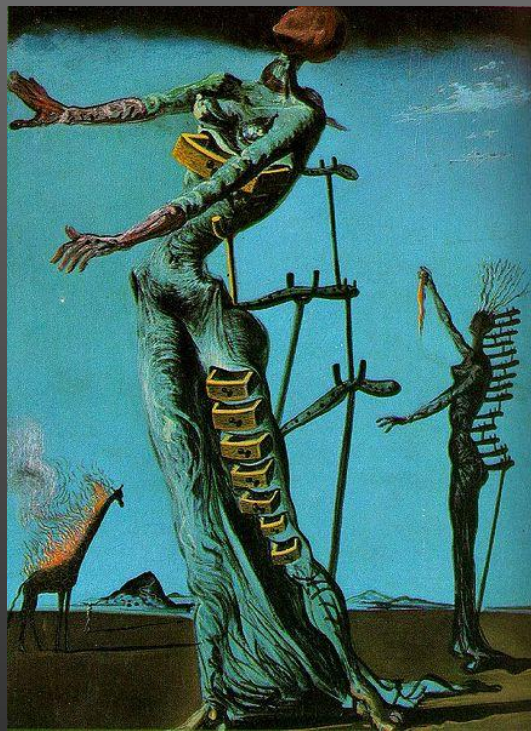
THE BURNING GIRAFFE

The meaning of the painting is of Dali's personal struggle within his country. The burning Giraffe commemorates the surrealist style of Salvador dali.

The burning giraffe has basically become a totem for dali to use within his paintings. It is due to the fact the the animal is a premonition of war. Also the fire which is a sign of death and danger, which was very prominent in greece during that time.

The females within the painting focused on the female sexuality and also fetishism. These were common themes dali used. *The tailbone women* their skins seem be peeling off, basically exposing them. What's interesting is that dali had placed these two women in a dream landscape evidence gathered from the exceptional color usage.

In addition the work conveys contrast through texture, because the painting looks to have a rough surface, but in spite of that it is very much a smooth textured painting.



Value and color is emphasized throughout the painting. The women in the middle ground of the painting has a mixture of dark blue and green, layered on top of that color is a smoke like texture on the womens clothing. The background of the painting uses cool colors to show a dreamlike effect.

With that in mind the women in the painting shows the heavily used value, with the transition between light and dark allowing the women to look 3D instead of being a 2D image.. Value is also used along the floor where the two women are standing. Space/perception of the work can be seen from the painting, the woman in the background throws my perception of, because of the way she is position or placed in the painting. Space was used well within the painting, the distance of the giraffe and the two women, the land in the background had been all spaced neatly.

Artist: Salvador Dali

Location: Kunstmuseum Basel

Created: 1937

Period: Surrealism

Medium: Oil paint

Dimensions: 35 cm × 27 cm (13.8 in × 10.6 in)

SWAN REFLECTING ELEPHANTS

Dali emphasizes the swans in the middle of the work. Creating a double image within the painting. Dali brought forth a method he said to be “spontaneous method of irrational understanding...” The painting is also reflected from Metamorphosis of Narcissus. Dali wanted to create the illusion effect within his work.

In the background of the painting is a Catalonian landscape depicted in fiery fall colors, the brushwork is creating swirls in the cliffs that surround the lake to contrast with the stillness of the water.

The painting was created with three properties: hue, value and intensity. Salvador uses more of a warm color in this painting. The artwork balances itself between light and dark.

The paint illuminates the idea of a 3D effect that is implied with the use of lightness and dark. The challenging part of interpreting this painting is that understanding the law and surreal part of the work. But the importance is that it is merely swans that reflect elephants there isn't much to the painting.

Knowing that a reflection cannot be independent, just due to the fact that it must have a cause. This painting has a very challenging interpretation of its own. But must be respected for being a unique surreal painting.

Artist: Salvador
Dali
Dimensions: 1' 8" x
2' 6"
Location: private
collection
Created: 1937
Period: Surrealism
Medium: Oil paint



“Swans Reflecting Elephants, 1937 by Salvador Dalí.”
Dalipaintings,
www.dalipaintings.com/swans-reflecting-elephants.jsp.

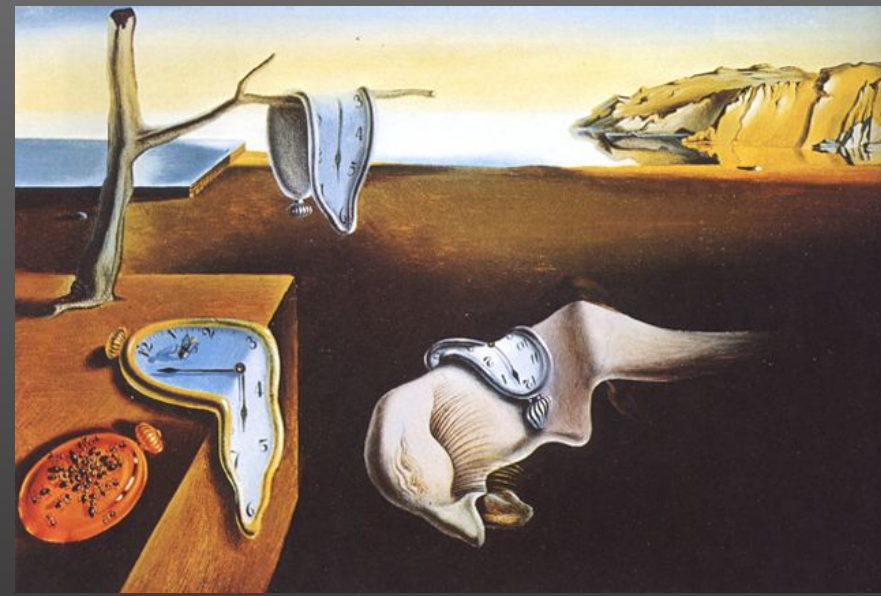
THE PERSISTENCE OF MEMORY

The emphasis of the artwork is through the clocks. This weird and unexpected juxtaposition poses a lot of questions. The concept of the work comes from dreams that Dali had. This places a huge role in the painting. Basically the clocks represent passage of time experienced in our dreams. But overall the theme of the piece focuses on time.

The texture of the work would seem to have a smooth surface. The painting focuses on senses such as sight and touch. To smooth surfaces to rough objects. The work creates a visual experience of touch.

The environment looks to be a place that can be recognized only by Dali himself. But to us can be interpreted differently causing us to think that the ants and clock were placed in unfamiliar area.

There is a value of color with a strong light and darkness in the work. The thick value highlights details. The values can be implied to create the illusion of bark on the tree. The creature in the center of the work can be drawn as Dali's imaginative thoughts.



The work gives an illusion of a 3D effect that can be implied with the use of light. Along with the 3D effect Dali was able to cause a trick of eye fooling to viewers.

Artist: Salvador Dali

Dimensions: 0' 9" x 1' 1"

Location: Museum of Modern Art (since 1934)

Medium: Oil on canvas

Created: 1931

Periods: Surrealism, Avant-garde

ANALYSIS OF FORMAL QUALITIES OF DALI'S ARTWORK

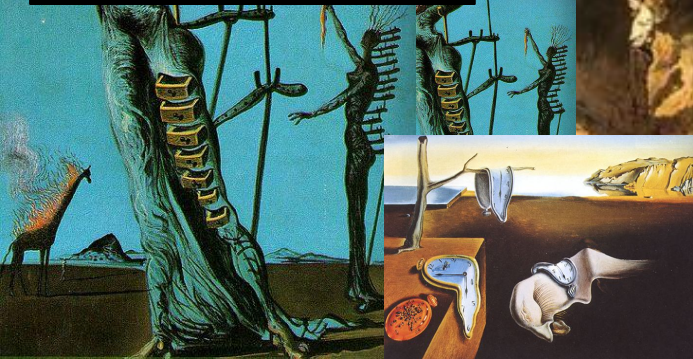
The Persistence of Memory: Emphasis time with the use of melting clocks. The creature in the center of the work is an imaginative part of Dali's dream. Including what he calls "paralyzing tricks of eye-fooling," a close up of Dali's face. This painting is discredit from the reality of our world. The desert landscapes is an inspiration of Dali's home.



Swans Reflecting Elephants: A well created painting that demonstrates Dali's ability to create a double image. Having smooth brushstrokes allowing the landscape to look more photographed. The brushwork is creating swirls in the cliffs that surround the lake. A 3D effect can be implied with the use of light. There is a value of color with a strong light and darkness in the work. A reflection (Swans) cannot be independent, just due to the fact that it must have a cause.



The Burning Giraffe: This painting has a very psychological meaning to it. Affecting not just the viewer but anyone that personally is dealing with a mental illness. The exceptional color use brings the viewer to look basically anywhere. When looking at the painting my attention immediately goes towards the giraffe. Not because that the title presents it, but out of everything to catch on fire only a giraffe is affected. The two women skeleton is well painted, Dali was able to expose the female sexualtiy. The drawers goes way back to Freud and the secret drawers in the human psyche. Dali's interpretation was to show suppression and subconscious life.



COMPARE AND CONTRAST

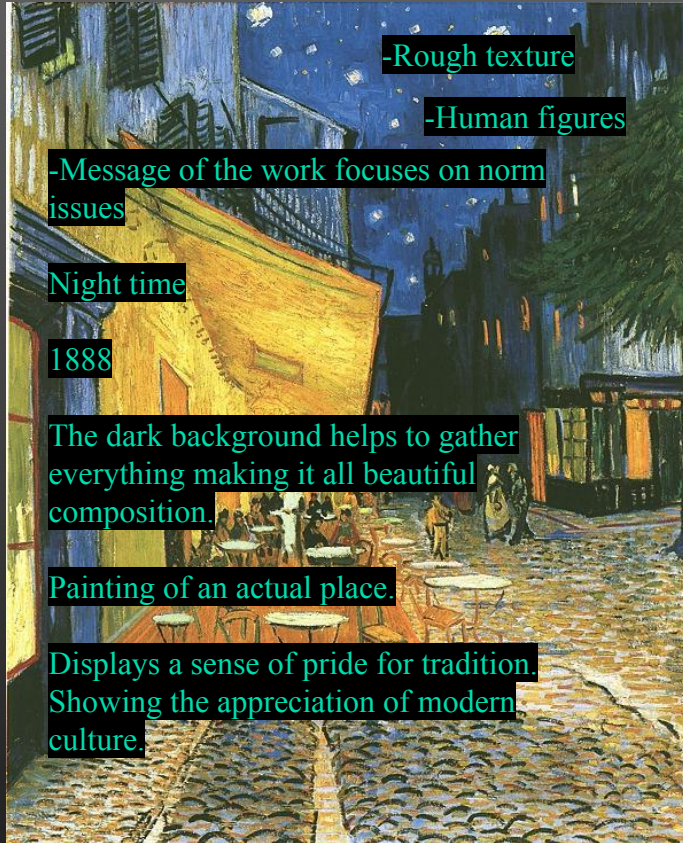
Both outdoors

Oil Paintings

A 3D effect that can be implied with the use of light.

Influencing or inspire change.

Conveying messages in the paintings.



-Rough texture

-Human figures

-Message of the work focuses on norm issues

Night time

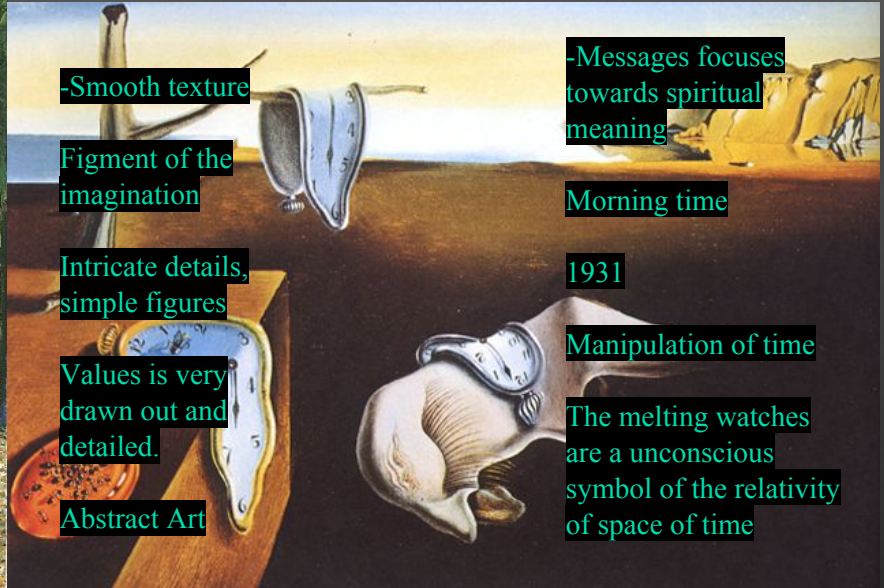
1888

The dark background helps to gather everything making it all beautiful composition.

Painting of an actual place.

Displays a sense of pride for tradition. Showing the appreciation of modern culture.

Both create a balance between cool and warm colors



-Smooth texture

Figment of the imagination

Intricate details, simple figures

Values is very drawn out and detailed.

Abstract Art

Value of light and dark

-Messages focuses towards spiritual meaning

Morning time

1931

Manipulation of time

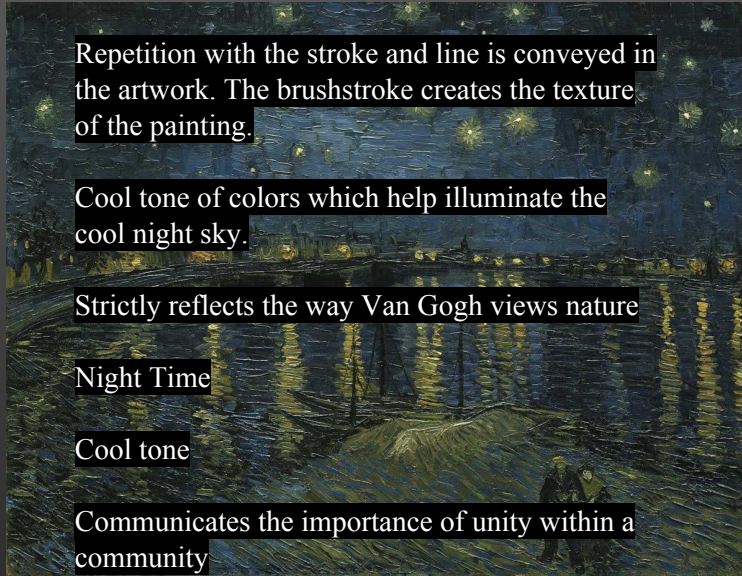
The melting watches are a unconscious symbol of the relativity of space of time

Both have furniture

Lines, form and shape

COMPARE AND CONTRAST

Double-image effect, Well detailed landscape, Emphasis through value of the work, Using light and darkness, Organic forms takes full space



Repetition with the stroke and line is conveyed in the artwork. The brushstroke creates the texture of the painting.

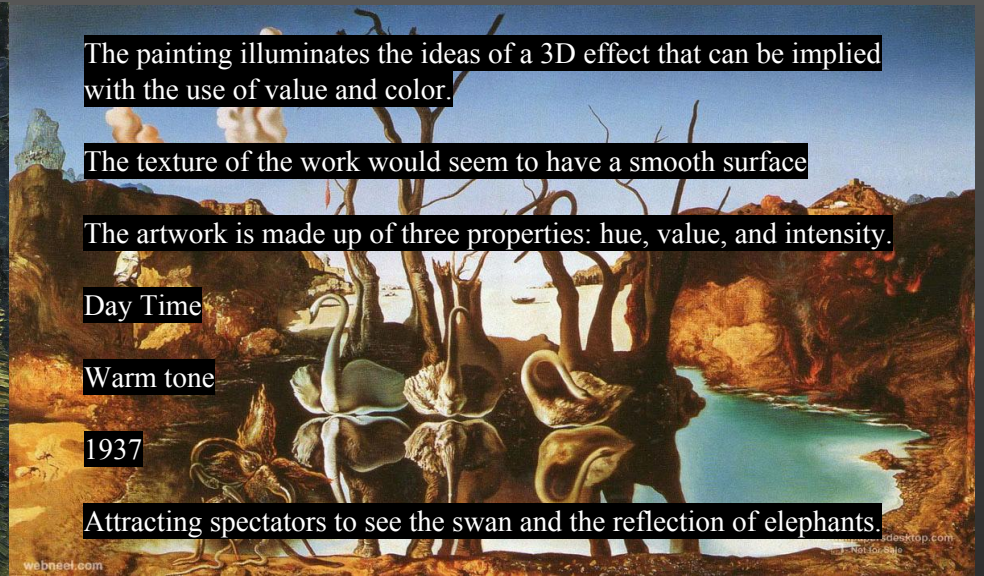
Cool tone of colors which help illuminate the cool night sky.

Strictly reflects the way Van Gogh views nature

Night Time

Cool tone

Communicates the importance of unity within a community



The painting illuminates the ideas of a 3D effect that can be implied with the use of value and color.

The texture of the work would seem to have a smooth surface

The artwork is made up of three properties: hue, value, and intensity.

Day Time

Warm tone

1937

Attracting spectators to see the swan and the reflection of elephants.

Outdoors

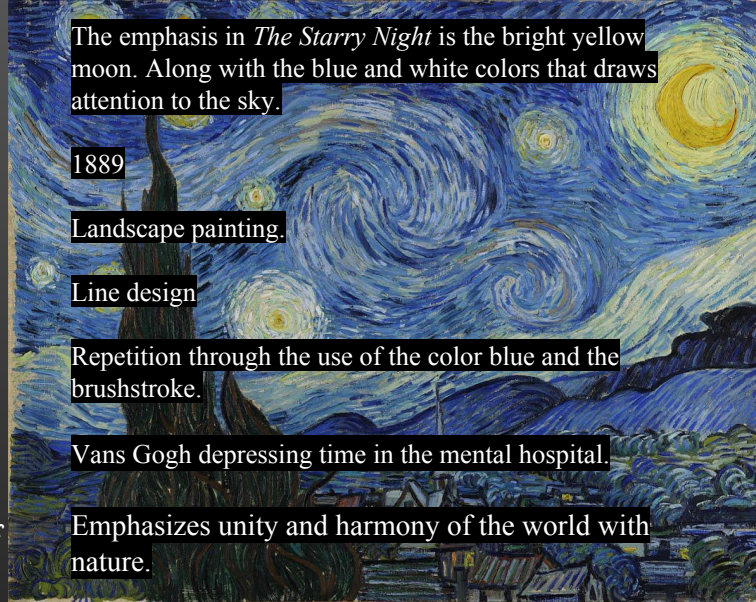
- foreground, background and middleground, horizon line,
- Displays symbols that represent a culture as a whole,

Nature fills entire background

Color flows naturally together, soft warm/cold color mixed.

COMPARE AND CONTRAST

Cool tone, Oil Painting, Male artist,



The emphasis in *The Starry Night* is the bright yellow moon. Along with the blue and white colors that draws attention to the sky.

1889

Landscape painting.

Line design

Repetition through the use of the color blue and the brushstroke.

Vans Gogh depressing time in the mental hospital.

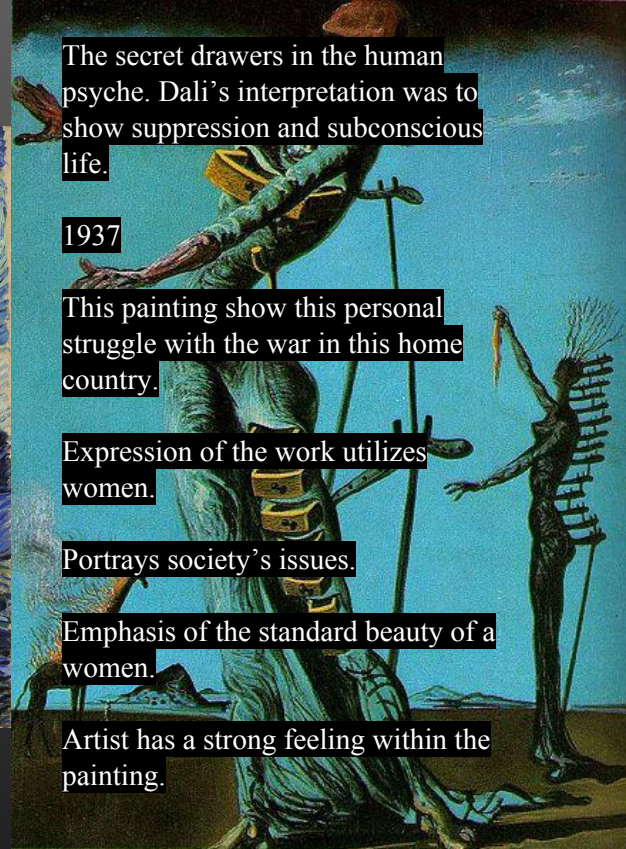
Emphasizes unity and harmony of the world with nature.

Manipulation of shadow and value of color.

Both work emphasizes movement.

Abstract feeling.

Bold black lines emphasize specific symbols.



The secret drawers in the human psyche. Dali's interpretation was to show suppression and subconscious life.

1937

This painting show this personal struggle with the war in this home country.

Expression of the work utilizes women.

Portrays society's issues.

Emphasis of the standard beauty of a women.

Artist has a strong feeling within the painting.

Both paintings interpret mental illness. Going in-depth with human psyche.

Message focuses towards spiritual meaning.

The paintings represent both artist own experience.

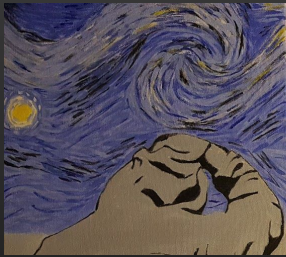
Figures appear animated, use the black to provide contrast and to emphasize details.

COMPARING ARTIST

Vincent Van Gogh	Comparing artist	Salvador Dali
<ul style="list-style-type: none">- Praised art and was a destiny.- Created work of landscape and paintings that were- Inspired by Japanese culture.- Portrays mental illness and heartfelt pieces- Spent his money on his art materials rather than caring for his well-being.- Post-impressionist artist- Praised light and color- Dutch artist- Born March 30, 1853	<ul style="list-style-type: none">- Study Art- Created work that represented the experience that happened.- Created an alternative reality through their paintings.- Manipulation of shadows and value of color.- Focused on society's issues.- Focused on showing different perspectives on landscape, issues, or experiences- Created work that had impressionism	<ul style="list-style-type: none">- Colorful personality- Influenced by different artists such as Picasso- Work with three themes- Takes advantage of society's issues- Surrealist artist- 19th century- Spanish artist- Born May 11, 1904

CONNECTION TO OWN ART- VINCENT VAN GOGH

My inspiration and connection to my triptych is Vincent Van Gogh's *The Starry Night*. The reason why I used Van Gogh was because I attempted to focus on post-impressionist movement and the experience that Van Gogh had, creating the painting. The focus of the piece revolved around me, the community I live in and what I contributed to community. The first panel of my triptych to the far left, is an attempt to create the experience that Van Gogh had in the letter he wrote to his brother Theo; "This morning I saw the country from my window a long time before sunrise, with nothing but the morning star, which looked very big." This is my interpretation of that experience. The second panel is the city that I live in and the vehicles represent the car community and street racing within my city. The city emulates the quiet village that is in *The Starry Night* revitalized in a modern way. The work communicates the importance of unity within a community. Socially and culturally.



Endless Journey
By: Josh Homesombath
Triptych, Acrylic on canvas, 2017
30.48cm x 60.96cm

CONNECTION TO OWN ART-VINCENT VAN GOGH



I utilized Van Gogh's yellow moon and the exploding stars above the sky. In addition, Value is something that I utilized in my painting. Especially within the first panel to the far left, I used a dark color to bring out a low value on the man's sweater. The third to the far right, uses a mixture of dark and light colors to bring out a mixture of high and low values. Evidence of the values is seen on the tires of the vehicle. Some may argue that Van Gogh's *The Starry Night* doesn't show any value, but seen on the hill of the painting that value is prominent and the use of light blue and dark navy is clearly seen by the brushstroke of the painting. Also, I used brushstrokes that detailed and provided movement within the sky, while using different colors and value.



This was a piece created to define me as a growing artist and how this community or city that I belong to affects me. I was able to express what the car community has done and as well as my city; going on night runs with friends and family. Being able to see the city that never sleeps with the quiet night sky above. Emulating the constant repetition of stroke from the work of Van Gogh; *The Starry night* was a piece that allowed me to see nature from a different perspective. By not only looking, but rather connect and feel the senses around me. The work mentally distorted my way of seeing the world. Taking a moment to view things from another perspective perhaps that was the intentions of Van Gogh's, *Starry Night*.

CONNECTION TO OWN ART- SALVADOR DALI



Surrealist Household

By: Josh Homesombath

Acrylic, Canvas, 2017

60.96cm x 60.92cm

I decided to base this acrylic painting on the art movement Surrealism and Salvador Dali's; *The Persistence of Memory*. It was to show the meaning of time and materialistic things, I analyzed the meaning of the work and I thought of time not lasting to long. I specifically chose the art movement, Surrealism because it uses two unconscious imagery being: Improved art and Hallucinatory scenes. It just always interest me to look closely at all the fine lines and color variations. As well as the realistic technique to create Hallucinatory scenes also using Improved art. Surrealism is mixed with life like art style that allowed me to portray this industrial style painting.

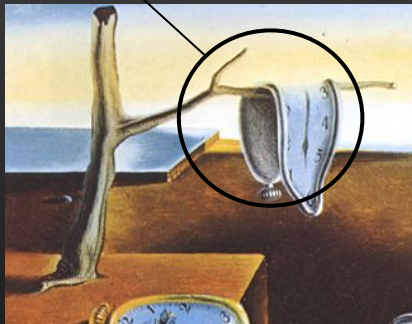
My intentions from the beginning was to mix the Japanese architecture with the Surrealist, I found it very interesting that Japanese households are very structured and well designed. Built to finest details. Mixing the two was somewhat of a change. Because of the well structured design, mixing Surrealism is basically disturbing the well structured design of the Japanese culture.

I utilized three colors that stand out and is noticeable, the blue water, the red cushion and the yellow on the clock. I attempted to make sure to measure everything, because to keep the structure. One thing I felt that I didn't succeed with is the realistic part of the painting, Unlike this painting, *The Persistence of Memory* utilized value to demonstrate the dark and warm color. As well as the shadow, curve and fine line. I was unfortunately not able to emulate the fine details of *The Persistence of Memory*.

CONNECTION TO OWN ART- SALVADOR DALI

Things that I've emulated from the painting is the clock and the environmental aspects. Upon looking at the painting from Salvador Dali, the urban landscape is utilized in *The Persistence of Memory*. I tried to add that the urban landscape within my painting, adding the trees, as well as the water stream. I emulated the melting clock to indicate the meaning that time is irrelevant. In my own painting I utilized that meaning within a living room. My time is constantly spent in a room, studying, thinking, sleeping and working. I wouldn't say that those moments were a waste of time, but in that moment time was constantly passing by. The difficult part of this painting was making sure everything was very clean. Creating a landscape I am able to paint freely, but creating an interior design painting there's a lot of measurements and line work to do. Which I was capable of doing.

Surrealist art is revolved around dreams and the ability to tell stories. The art is focused on the literature aspect of art. Surrealist art can be justified in any context. I have inferred that Surrealist art can be manipulated into anything.



REFLECTION OF CONNECTION OF OWN ART-VINCENT VAN GOGH AND SALVADOR DALI

Overall throughout my art life, I plan to utilize the skills that I have developed for as long as I possible. I felt that these two amazing artist inspired my viewpoints of urban landscape and viewing nature from another perspective. I was able to flourish as a young artist from using these two artist. Things that I have learned from observing Vincent Van Gogh and Salvador Dali.

- Value can be heavily used to express ones creative mind and feeling.
- Nature can be viewed from any perspective.
- Paintings can mentally disorders one's thoughts, going in-depth with human-psyche.
- Manipulation of color and figure allows to create a smooth and rough appearance, portraying the experience of the artist, cool and warmth allows the viewer to observe and take in the delicate work.
- Being able to recreate thoughts, memories, dreams, environments. That allows the artist to perfect their skills as well as presenting their ideology, their experience and their thoughts.

For four years, I was able to learn and use the Ib methods to help me evaluate critical components of my artwork. I felt that it helped me structure my work and without any of those methods I would have struggled to accomplish my work. For the past 2 years I have taken high level visual art, the methods of Ib art has prepared me extremely in the long run. I feel that once in college I am able to use the methods I have gathered to accomplish any assignments or task at hand.